

**SUBJECT : SCIENCE (MULTIPLE CHOICE QUESTIONS)**

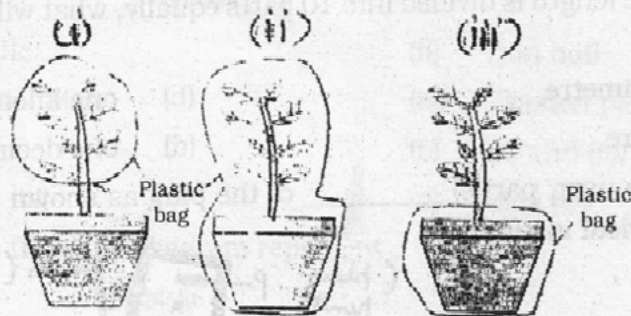
Time : 30 minutes

MM : 15

**General Instructions :**

- i) Attempt all the questions.
- ii) There are 15 multiple choice questions in total. Only one of the options in every question is correct. Put a (✓) against the correct option.
- iii) Each question carries 1 mark.
- iv) Do not use white fluid on these sheets.
- v) Use only pen to mark the answers.

Q1. Which of the following illustrations correctly demonstrate the process of transpiration in plants?

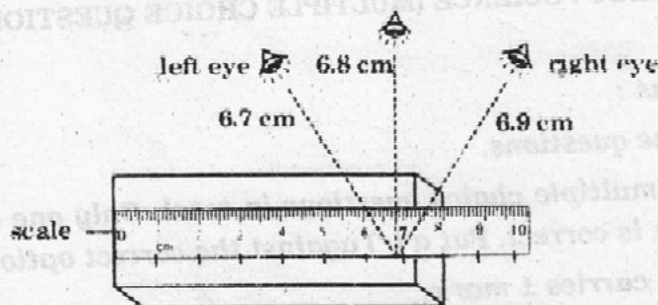


- |                |                         |
|----------------|-------------------------|
| (a) only (i)   | (b) only (ii)           |
| (c) only (iii) | (d) both (ii) and (iii) |
- Q2. Which of these tools given can be used to measure the length of a curved line as shown?



- |                        |                                    |
|------------------------|------------------------------------|
| (a) scale, thread, pen | (b) pencil, silk thread, metal key |
| (c) stick, pen, wool   | (d) wooden piece, scale, pencil    |
- Q3. Which of the following can be measured using a measuring tape?
- |                                 |                       |
|---------------------------------|-----------------------|
| (i) Heights of pupils           | (ii) Length of a bag  |
| (iii) Thickness of an iron nail | (iv) Body measurement |
- |                        |                       |
|------------------------|-----------------------|
| (a) only (iv)          | (b) both (i) and (ii) |
| (c) (i), (ii) and (iv) | (d) only (ii)         |

Q4. Observe the given figure :



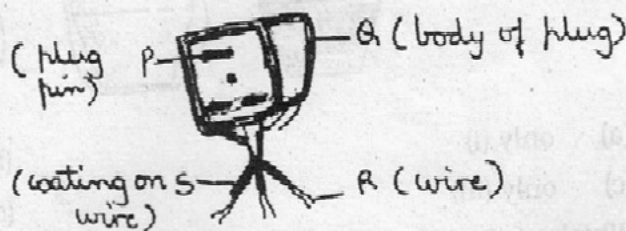
Which of the following is the correct reading to be taken as the length?

- (a) 6.7 cm (b) 6.9 cm  
(c) 6.6 cm (d) 6.8 cm
- Q5. If a centimetre length is divided into 10 parts equally, what will be the length of each part?

- (a) one millimetre (b) one kilometre  
(c) one metre (d) one decimetre

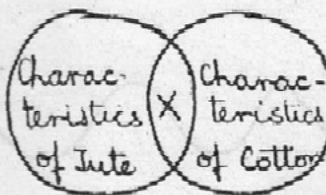
Q6. To protect the user, part(s) \_\_\_\_\_ of the plug as shown in the figure must be made of electrical insulators.

- (a) P only  
(b) R only  
(c) both R and S  
(d) both Q and S



Q7. Refer the given Venn diagram. Which of the characteristics can be represented as X.

- (a) comfortable to wear in hot and humid weather  
(b) warm and soft  
(c) fluffy texture  
(d) both are natural fibres



Q8. Which of the following food samples will show the test for fats?

- (a) rice and potato (b) groundnut and mustard  
(c) mustard and potato (d) wheat and groundnut

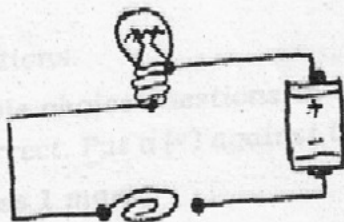
Q9. The tip of the second's hand of a clock is coloured red. Which of the following types of motion will be exhibited by the red coloured tip of the second's hand of this clock?

- A. Random motion B. Periodic motion  
C. Circular motion D. Rectilinear motion

- (a) A and B  
(c) A and C

- (b) C and D  
(d) B and C

Q10. What does the diagram drawn below represent :



- (a) a closed circuit  
(c) an electric torch

- (b) a circuit with switch 'OFF'  
(d) a circuit with switch 'ON'

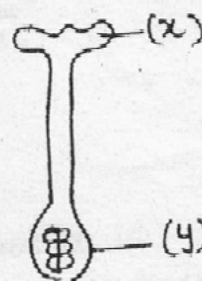
Q11. What can be placed between the open ends to light up the bulb?  
(Refer to Q.10)

- (i) Needle  
(iii) Copper coin  
(a) (i) and (ii)  
(c) (i), (ii) and (iii)

- (ii) Iron nail  
(iv) Wooden piece  
(b) (ii) and (iii)  
(d) only (iv)

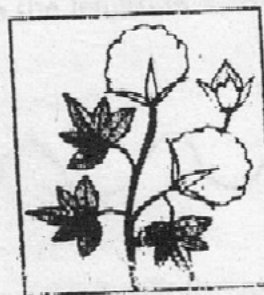
Q12. Parts x and y in the given diagram represent :

- (a) x - stigma y - style  
(b) x - style y - ovary  
(c) x - stigma y - ovary  
(d) x - ovary y - stigma



Q13. In the diagram given below identify the part from which cotton fibre is made :

- (a) flower  
(b) bud  
(c) fruit  
(d) stem



Q14. Which of the following plants have fibrous roots?

- (a) grass and lily  
(c) grass and peepal  
(b) peepal and mango  
(d) mango and lily

Q15. On adding 2 drops of iodine solution to a piece of bread, Soumya observed that the bread turns blue-black. The given activity suggests that :

- (a) bread contains sugar  
(c) bread contains starch  
(b) bread contains fats  
(d) bread contains proteins